



Precat 85

“Expand Your Horizons.”

Precat
YACHTS

Design Philosophy

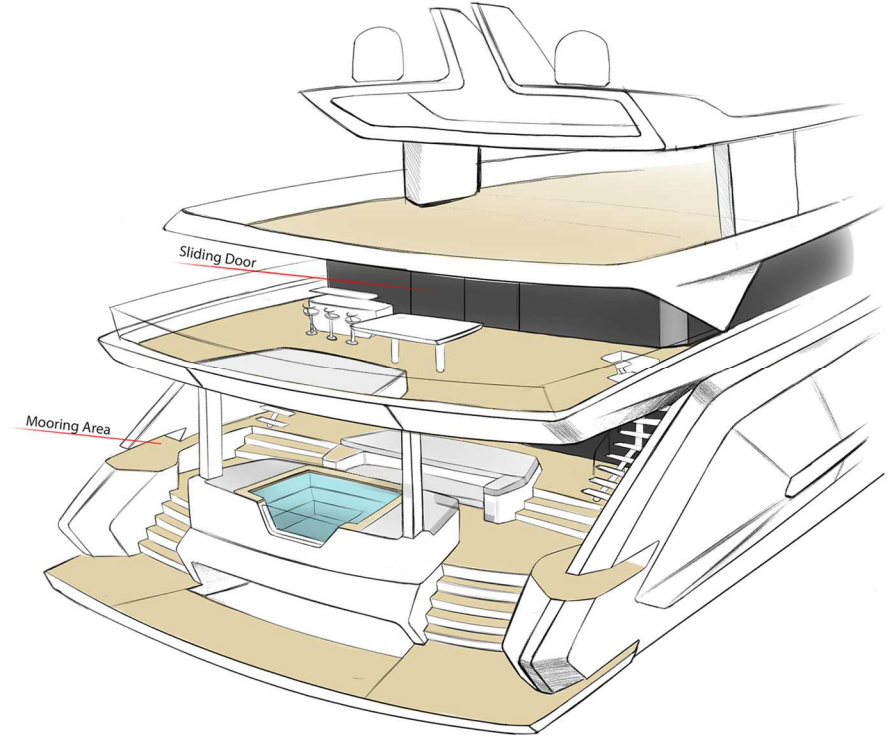
PROCAT 85 is a powerful design response that redefines life at sea.

The aim was to make guests feel not only above the water, but fully connected with it. That's why full-height windows and expansive interiors are placed at the heart of the design, creating an uninterrupted living experience as close to the sea as possible.

This concept stands out not merely through its size, but through the quality of life it delivers. With its generous volumes, modern lines, and seamless connection to nature, Procat 85 introduces a new perspective on true luxury.

Ömer Sirin

NAR Design Co- Founder





At dawn, **Procat 85** glides into the horizon

where power, elegance, and absolute safety converge
in the next generation of yachting.

The New Standard of Grandeur and Elegance

With her towering freeboard and powerful lines, **Procat 85** sets a new benchmark in yacht design. Reflections of sea and sky on her glass surfaces unite this mighty form in perfect harmony with its surroundings





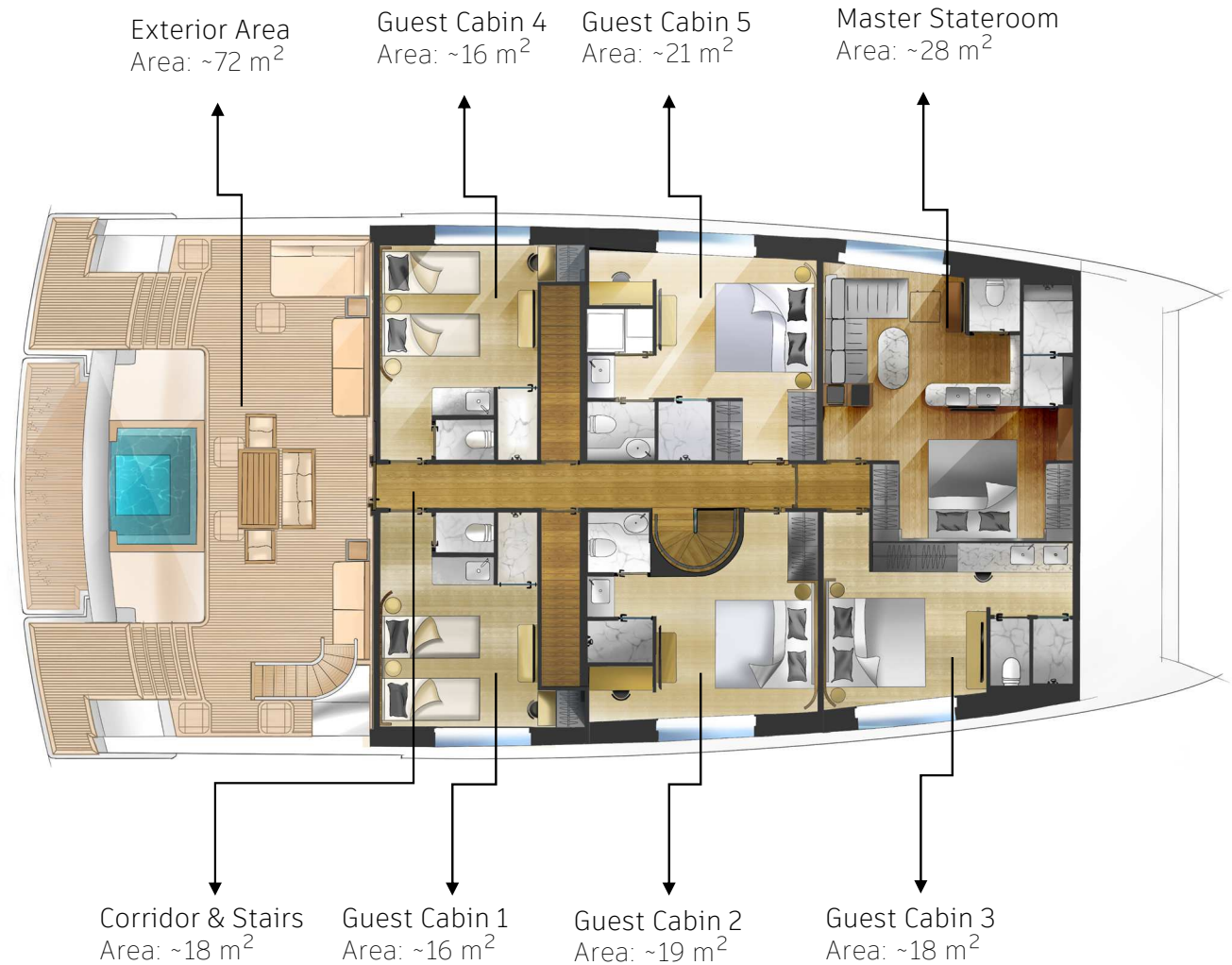
A New Experience on Every Deck

Procat 85 offers a unique living experience across every deck. On the main deck, a custom-made 2,100-liter hot tub and generous lounge spaces set the stage for ultimate comfort, while the upper deck hosts a 12-seat dining table seamlessly connected with the salon and bar. Forward, a sunbathing and lounge area invites tranquil moments, and the expansive sun deck crowns it all with an exceptional party space designed for limitless entertainment.

Procat
YACHTS

MAIN DECK & CABINS

The main deck offers 136 m² of interiors, 50 m² of deck, and a 22 m² swim platform, totaling 72 m² of exterior living. Inside, 5 guest cabins and a master suite are framed by full-height windows, immersing every space in natural light and breathtaking sea views. Outside, a custom hot tub and a welcoming lunch area add comfort and charm to life at sea.



The Finest Start of the Day

Next to the custom hot tub on the main deck lies the perfect spot to enjoy your morning coffee with a sea view. With the first light of day, the sound of waves and the aroma of fresh coffee create an unforgettable start.







Five-Star Comfort at Sea

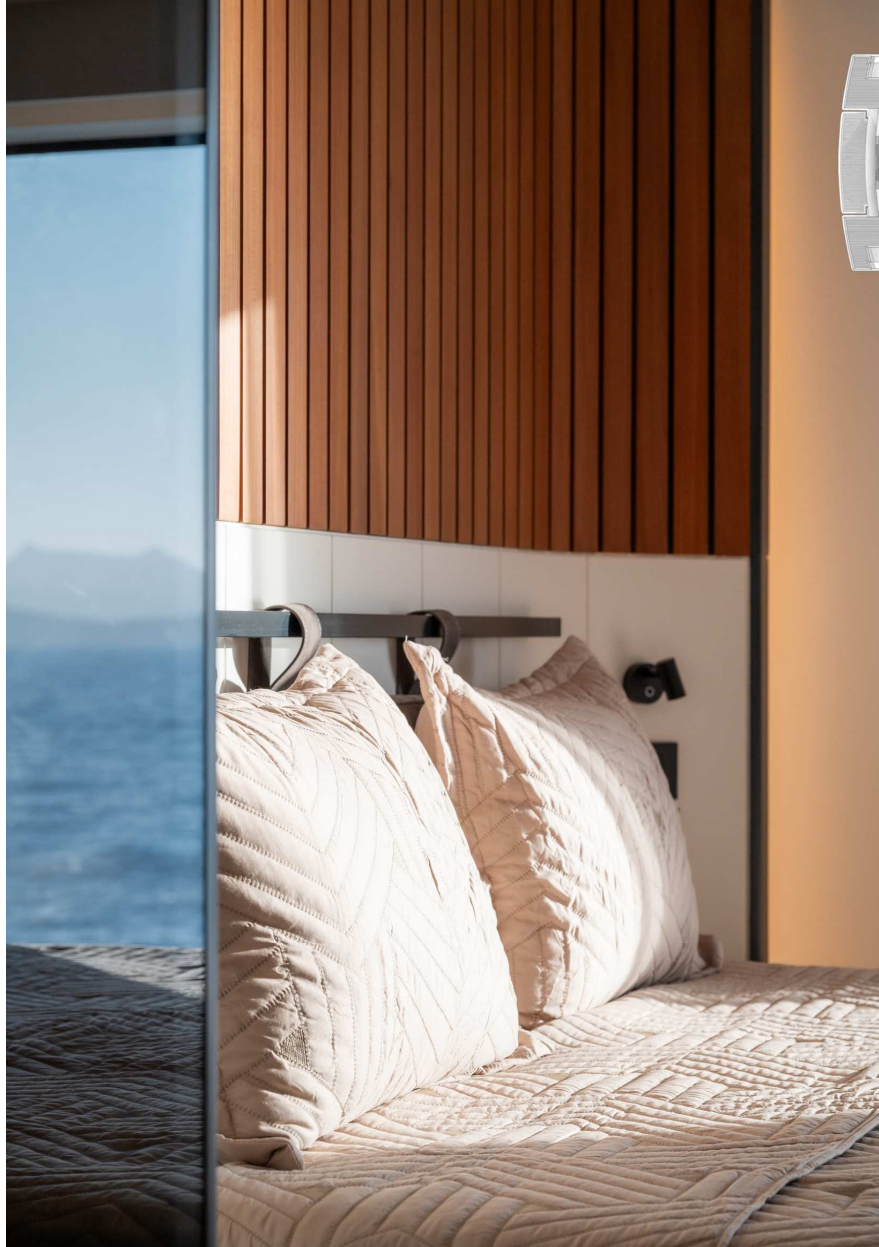
With its generous space, modern design, and full-height windows, this cabin brings hotel-level comfort to the sea. Bathed in natural daylight, the interior offers guests a unique sense of serenity and openness.





Rebirth with the Sea

Falling asleep here feels like drifting into the embrace of the ocean; waking up each morning is like being born again amidst the waves.



Elegance in Simplicity

The interior is crafted with subtle, tasteful, and elegant details; its minimalist design offers clarity without overwhelming the eye. This pure aesthetic, in harmony with the sea, creates serene spaces where one can truly be alone with oneself.

Where the Horizon Becomes Part of Your Room

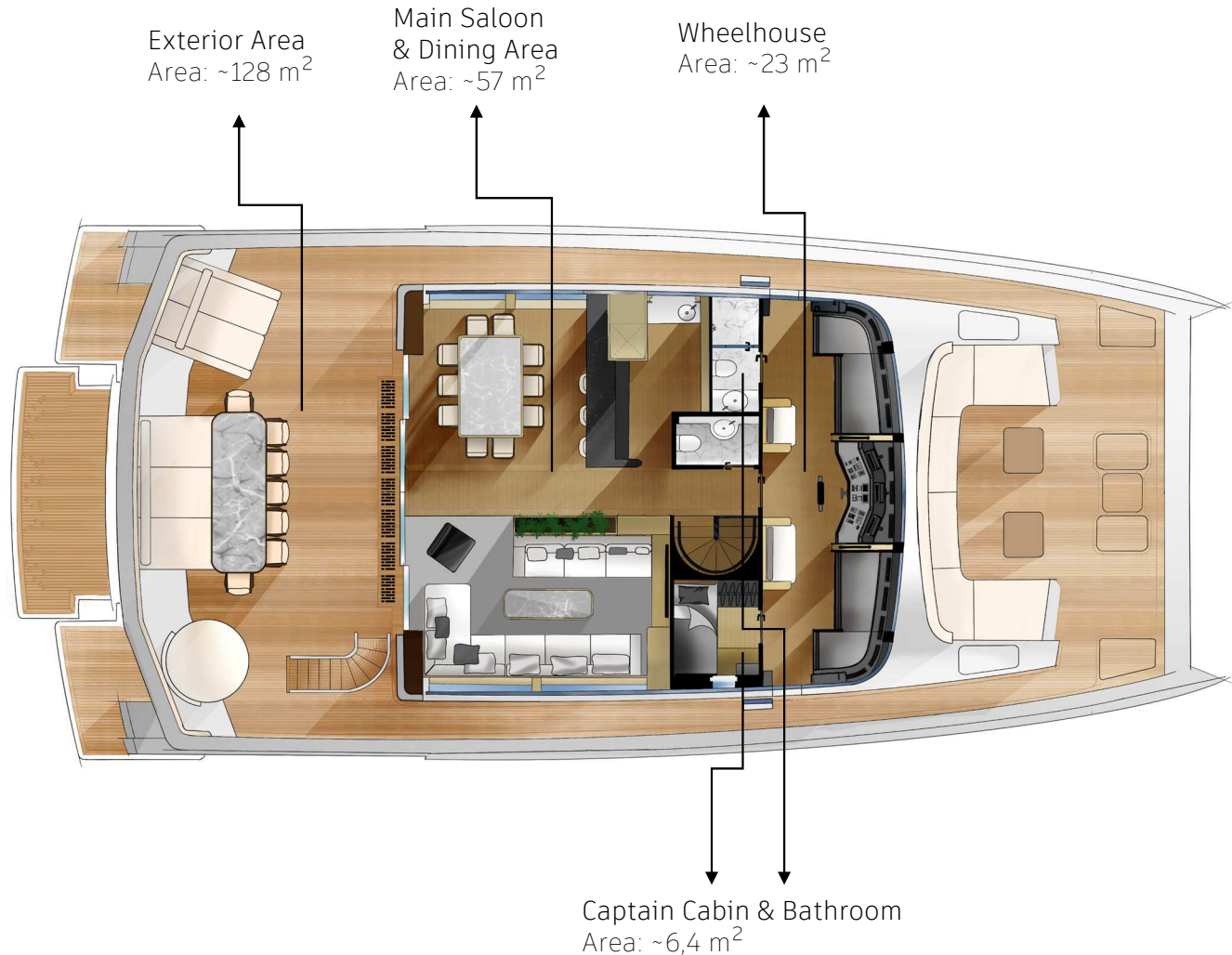
The Master Stateroom brings the horizon inside through its vast panoramic window. The serene bed, elegant vanity, and cozy lounge redefine **luxury at sea**.





UPPER DECK

With 128 m² of exterior and 86.5 m² of interior space, the Upper Deck is designed as the heart of social life on board. Aft, expansive sunpads and a 12-seat dining table set the stage for unforgettable moments by the sea, seamlessly connected to the salon through a vast zero-sill sliding glass door. Inside, the starboard side hosts a comfortable lounge, while the port side features a bar and a 10-seat dining table. Supported by a foodlift, the Upper Deck blends comfort with functionality in perfect harmony.





“Sea, Sun & Serenity”

Bathed in the clear light of midday, the aft deck becomes a vibrant living space in harmony with the sea. Expansive sunpads and the elegant dining table turn daylight hours into a joyful gathering, where every lunch by the water feels unforgettable.







Terrace to the Horizon

The bow lounge is the most privileged spot to embrace the view. With removable rails, it also transforms into a free platform for diving into the sea.





Unified Spaces

Sliding glass doors erase the boundaries, uniting the lounge and aft deck in perfect spatial harmony. Indoors and outdoors become one seamless living experience by the sea.



Elegant Comfort

Designed with modern lines, the lounge seating greets guests with understated elegance. Generous cushions and a light-filled ambiance transform the salon into a serene living space in the heart of the sea.





The Laughing Heart

“Your life is your life.
Know it while you have it.
You are marvelous,
the gods wait to delight
in you.”

Bukowski

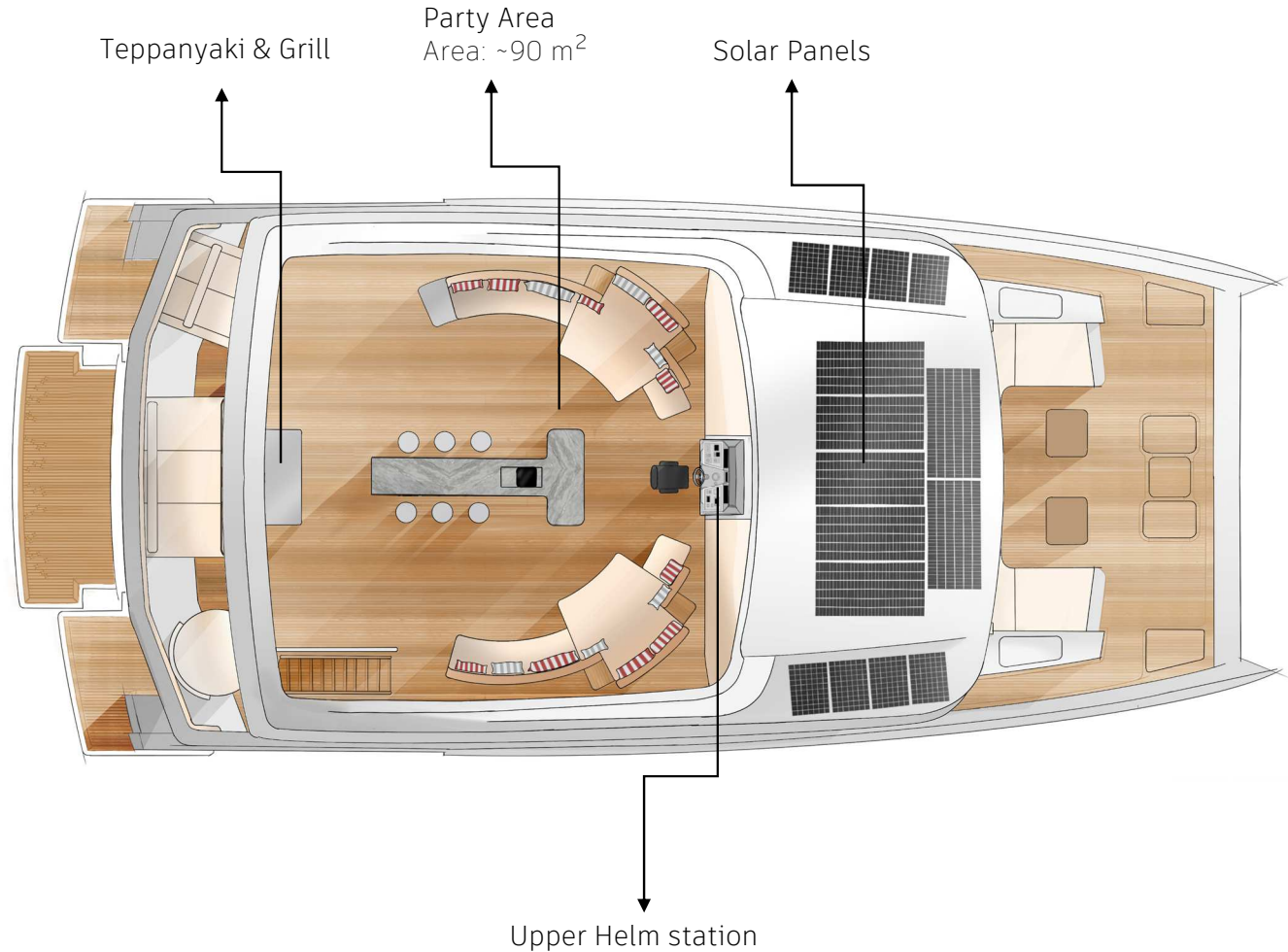




SUN DECK (PARTY DECK)

Spanning 90 m², the Sun Deck is designed as the yacht's ultimate party hub. A teppanyaki grill and bar station at the aft, a striking T-shaped dining bar with stools, and a dedicated DJ setup at the bow transform this space into a vibrant social arena.

Surrounded by 360° panoramic views and bathed in soft daylight filtering through semi-transparent solar panels above, it offers the perfect setting—whether for a laid-back barbecue with friends or a night of unforgettable music and dance.











SPECIFICATION



MAIN PARTICULARS

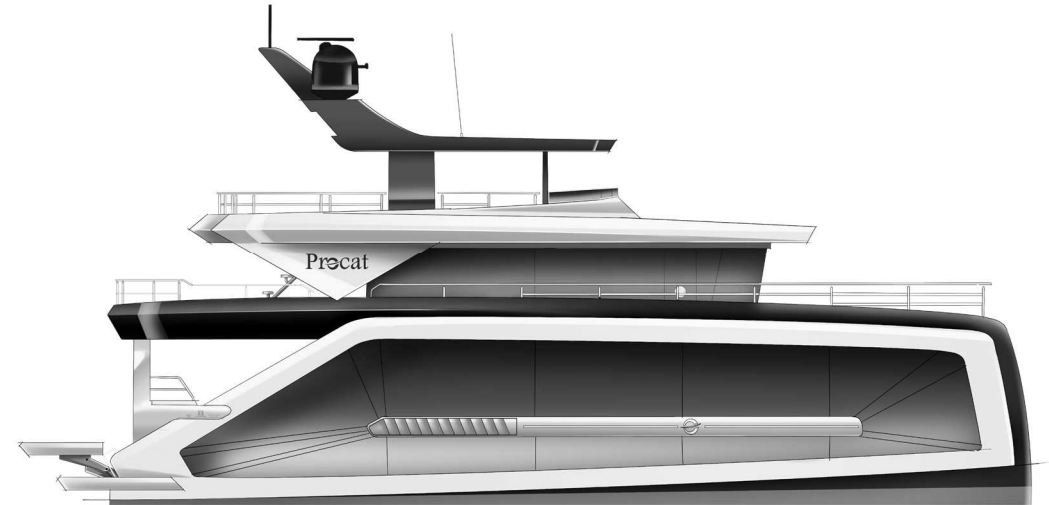
LOA: 26.1 m (85'7")
BEAM: 11.5 m (37'9")
MAX DRAFT: 2.06 m (6'10")
DISPLACEMENT: 185 t (407,855 lbs)
GT: 325
MAX SPEED: 13 knots
CRUISING SPEED: 10 knots
ECO CRUISING SPEED: 8 knots
RANGE @ CRUISING SPEED: 1300 Nm
RANGE @ ECO SPEED: 1600 Nm

MATERIAL: Aluminum Hull & Superstructure
NOTATION: ISO CATEGORY A –OCEAN-
MAIN ENGINES: 2xMAN V8-1300 hp
GENERATORS: 2x27 kW Cummins-Onan

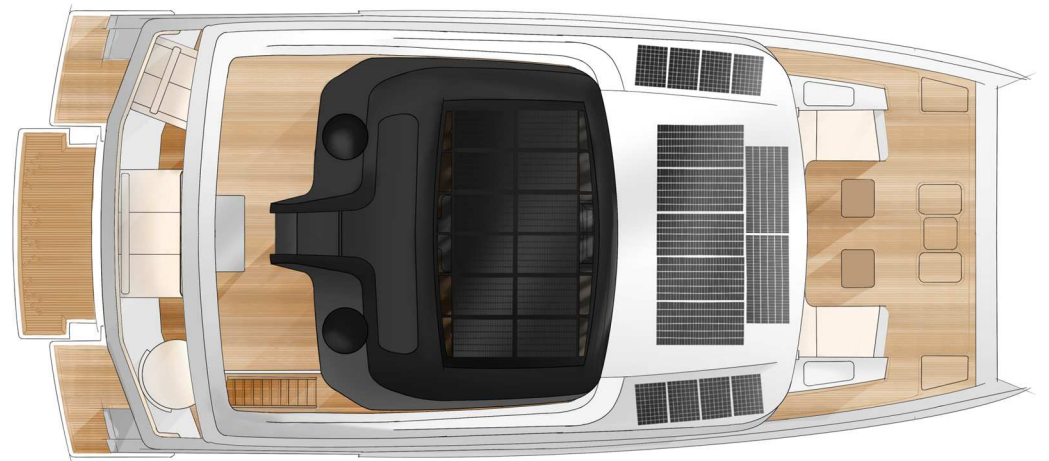
FUEL CAPACITY: 15480 L (4090 US Gal.)
FRESH WATER CAPACITY: 3578 L (945 US Gal.)
BLACK WATER CAPACITY: 2300 L (608 US Gal.)
GREY WATER CAPACITY: 2300 L (608 US Gal.)

GUEST: 12 in 6 Cabins
CREW: 7 in 4 Cabins

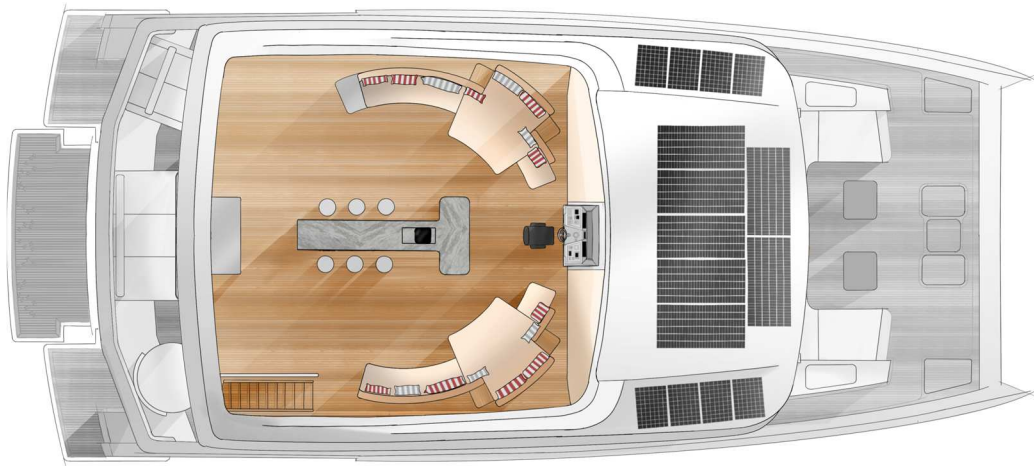
EXTERIOR STYLING: NAR DESIGN
INTERIOR DESIGN: PROCCEA
NAVAL ARCHITECTURE: NAR DESIGN
PROJECT MANAGEMENT: TUFAN & BROTHERS



PROFILE VIEW



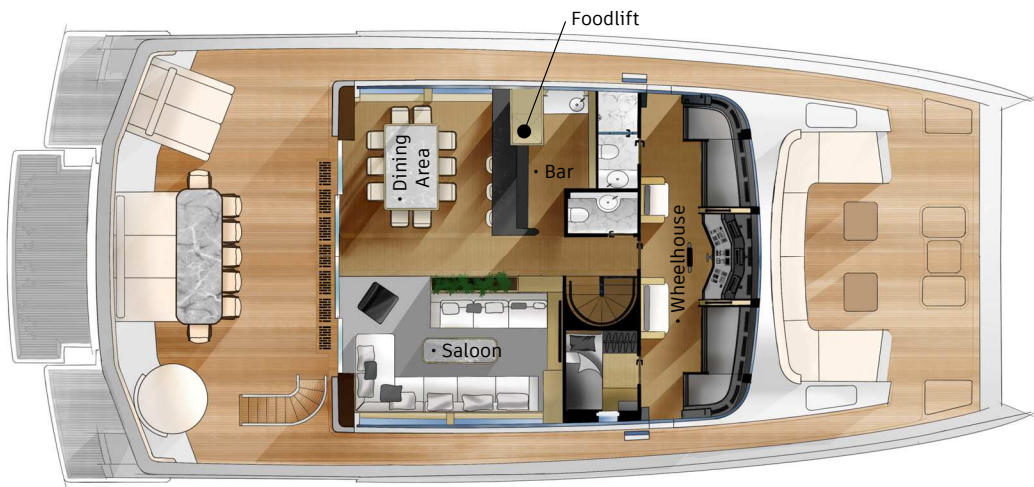
TOP VIEW



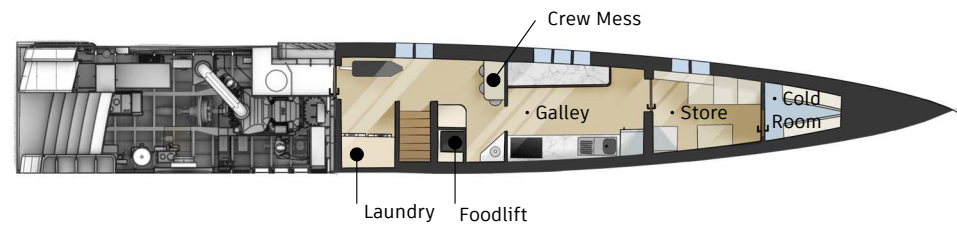
SUN/PARTY DECK



MAIN DECK



UPPER DECK



LOWER DECK

SAFETY INFRASTRUCTURE

Energy Resilience: A 170 kWh LiFePO₄ battery system is stored safely above the main deck, in two dedicated technical compartments port and starboard near the aft pool area. Each space is equipped with its own fire suppression sprinkler system, ensuring maximum safety.

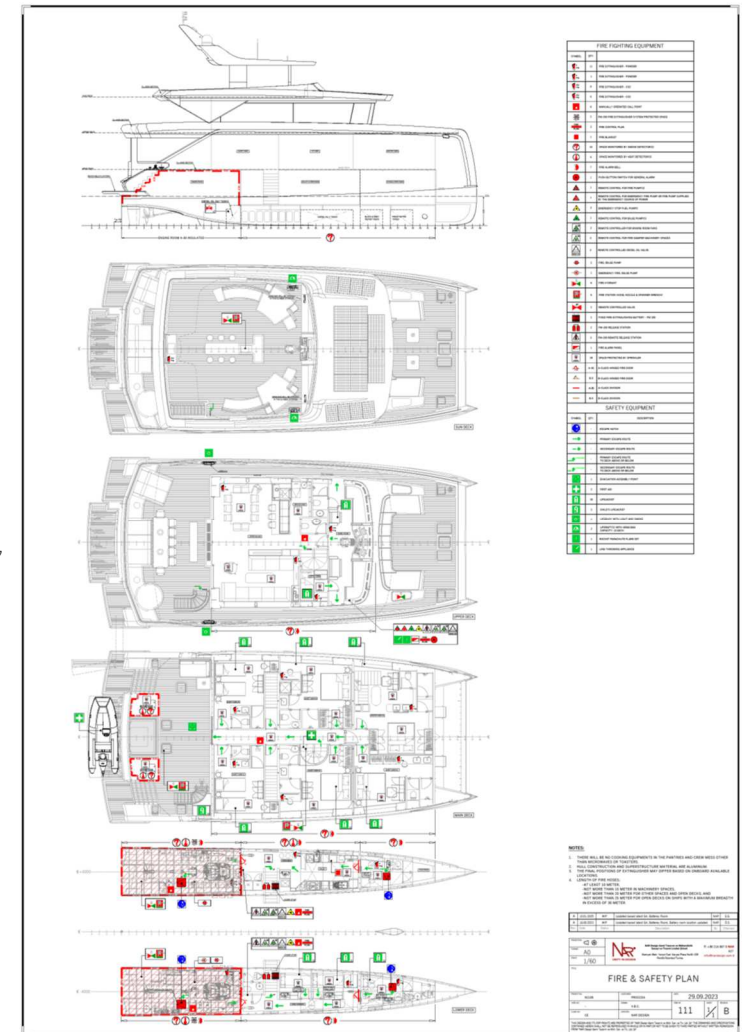
Watertight Integrity: Each demi-hull is divided into four watertight compartments—eight in total—delivering safety standards usually required for vessels above 500 GT. Even if one compartment is damaged, the yacht maintains buoyancy and stability, exceeding CE certification requirements for damaged stability.

Flooding Protection: A central bilge suction line, supported by automatic submersible pumps in every compartment, guarantees that even minor leaks are immediately detected and discharged, keeping bilges dry at all times.

Fire Protection: Both engine rooms are fitted with independent FM200 fixed fire suppression systems, while an addressable fire detection and sprinkler network ensures that any fire is rapidly contained, even without manual intervention. Portable extinguishers are located in every cabin, and each deck is equipped with hydrants for additional coverage.

Dual Propulsion Redundancy: Two completely independent engine rooms—each with its own 27 kW generator and AC/DC distribution panels—guarantee uninterrupted power and propulsion. Should one engine room become inoperable, the other can sustain all critical systems including power generation, navigation, HVAC, and hotel loads, maintaining both maneuverability and guest comfort. This level of redundancy is equivalent to a **Dual Propulsion class notation**, a standard rarely found in yachts of this size and category.

Procat 85 combines advanced technical resilience with crew-focused design, offering unmatched safety, uninterrupted operations, and a seamless guest experience at sea.



ENERGY INFRASTRUCTURE

Generators: Two 27 kW Cummins-Onan generators provide reliable and efficient backup power. In emergencies, they seamlessly take over loads, ensuring continuous operation.

Multi-Voltage Architecture: The yacht's electrical system supports 24V, 220V, and 380V infrastructures. This flexibility powers both technical operations and luxurious onboard amenities.

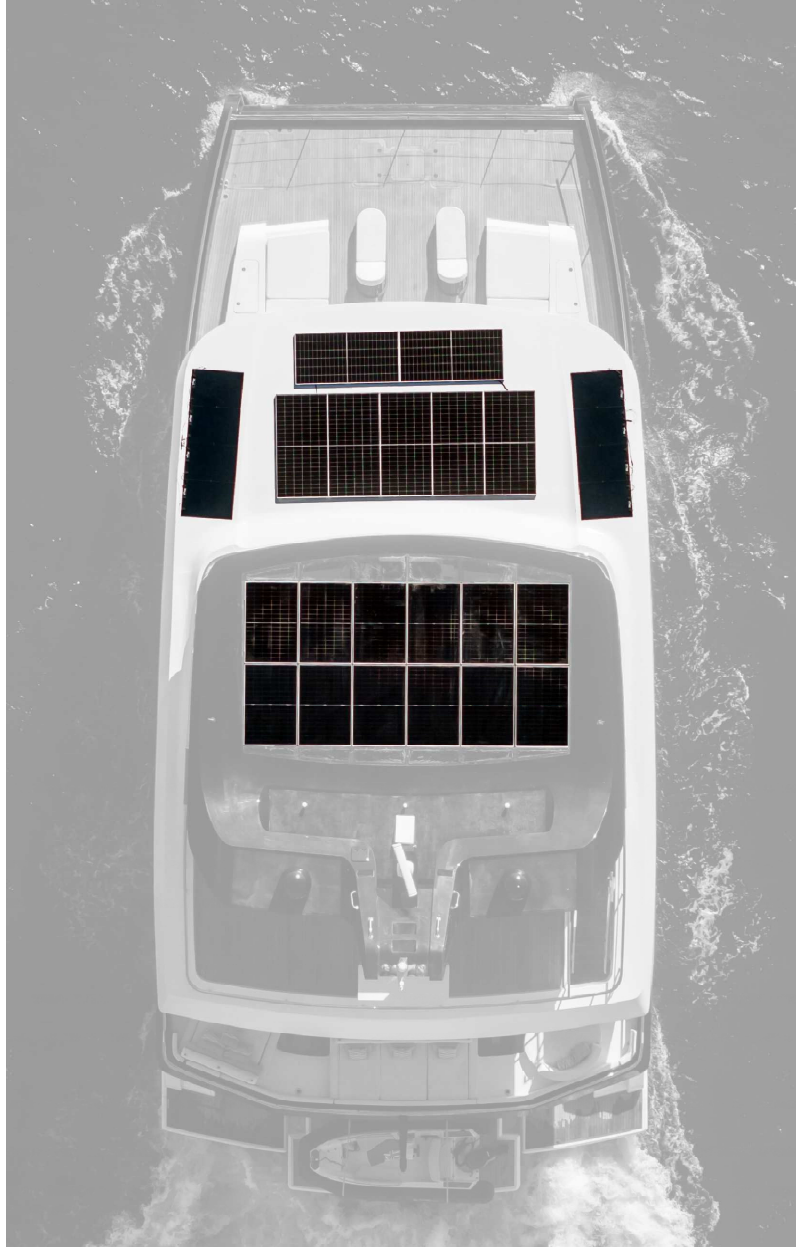
Redundancy: Independent main switchboards in both port and starboard engine rooms allow generators and systems to back each other up. This ensures secure and uninterrupted power distribution across the vessel.

Solar Power: With a maximum output of 11 kWh, the solar array generates an average of 70 kWh of carbon-free energy per day. This allows a significant portion of the yacht's energy needs to be met through renewable sources.

LiFePO₄ Batteries: 170 kWh high-safety battery bank stores the generated power. This energy supports full air conditioning and hotel loads throughout the night without running the generators.

Silence & Sustainability: At anchor, Procat 85 operates in complete silence without generator noise. The system powers the yacht's full air conditioning for **6+ hours through the night**, protecting natural environments and preserving a serene atmosphere in secluded bays.

While **Procat 85** delivers limitless comfort, it also offers unmatched energy redundancy in its class. Harnessing the silent power of the sun, it provides carbon-free luxury at sea – preserving nature while redefining onboard serenity.



ACCOMMODATION FEATURES

GUEST ACCOMMODATION

- 1 Owner Stateroom ~28 m²
- 5 Guest Cabin ~18 m²
- Saloon
- Dining Room & Bar
- 1 Day Head

APPLIANCES

Owner Stateroom

- 2x 55" Samsung QLED FrameTV
- Vitrifrigo Mini Refrigerator

Guest Cabins

- 55' Samsung QLED FrameTV

Saloon

- 75" Samsung QLED FrameTV
- Bang & Olufsen Beosound Stage
- Dolby Atmos Soundbar

CREW ACCOMMODATION

- 1 Captain Cabin
- 3 Double Crew Cabins

TENDER & TOYS

- 1 Capelli Tempest 460 Yacht Tender

GALLEY

STOVE

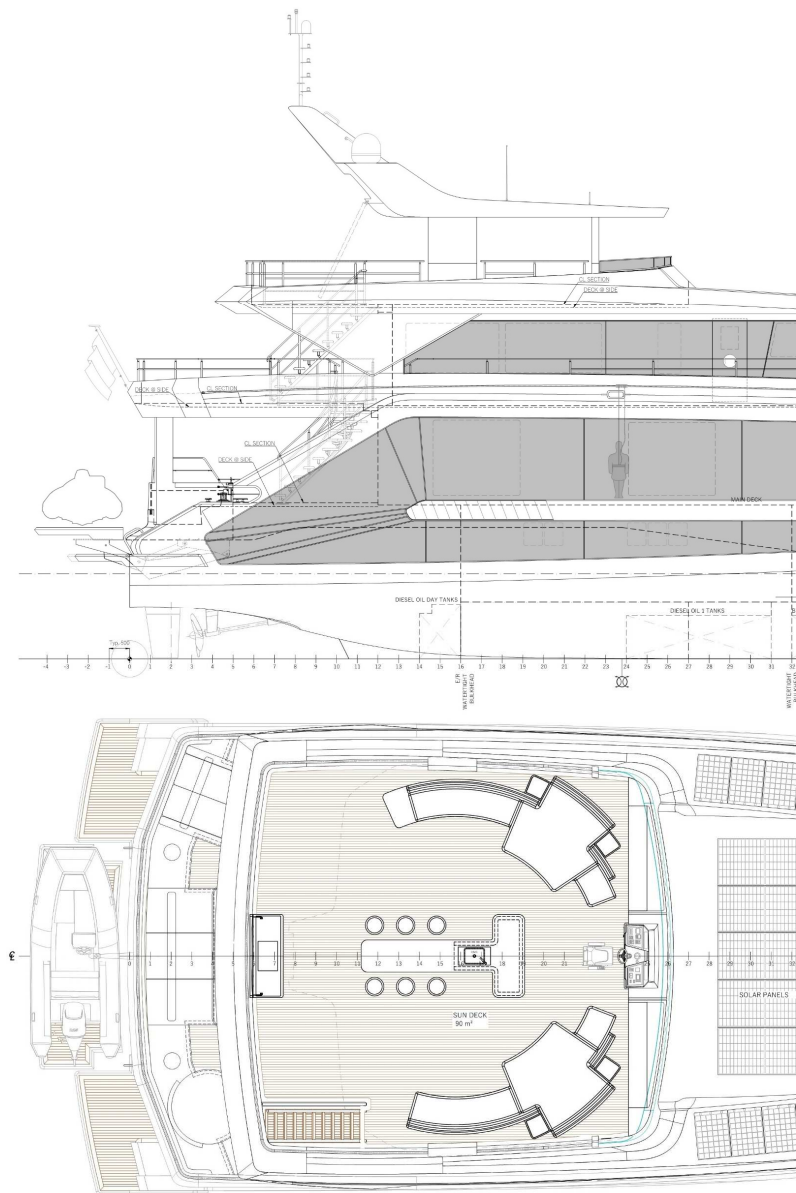
- Miele Oven & Stove.
- Miele Microwave
- Deep Fryer

REFRIGERATION

- Cold Room (+2 °C) 4000 lt
- Miele Fridge 308 lt
- Miele Deep Freezer 277 lt
- Vitrifrigo Wine Cooler (Upper Deck Bar)
- Vitrifrigo Mini Refrigerator (Upper Deck Bar)
- Scotsman Ice Maker (Upper Deck Bar)
- Scotsman Ice Maker (Sun Deck Bar)

APPLIANCES

- Inoksan Industrial Dishwasher (Galley)
- Elektrolux Glass Washer (Upper Deck Bar)
- Miele 10 kg Washing Dryer (Lower Deck Ps)
- Miele Hood (Galley)
- Gaggenau Vario Teppan Yaki (Sun Deck)
- Gaggenau Vario Electric Grill (Sun Deck)
- Food Lift (Lower Deck-Upper Deck)



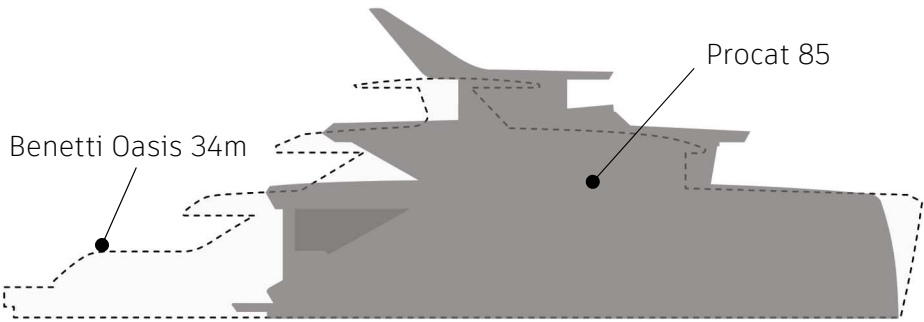
BENCHMARK

With a remarkable 325 GT gross tonnage, 290 m² of interior space, and 193 m² of exterior living areas, **Procat 85** outperforms not only its direct competitors in the 25–30 meter range, but even yachts significantly larger in size.

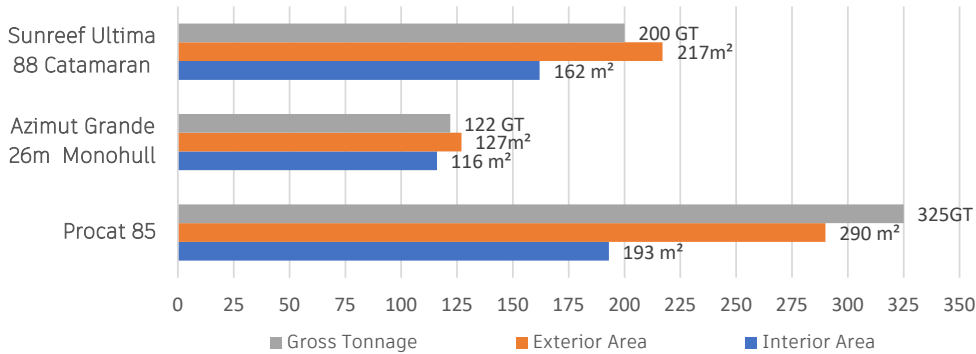
When compared with iconic models such as the **Sunreef Ultima 88 Catamaran** and the **Azimut Grande 26m Monohull**, **Procat 85** offers far greater interior volume and living space. This advantage is not only on paper—it translates into more generous, more comfortable, and highly functional spaces for guests in everyday use.

The benchmark extends beyond direct competitors. Even when measured against **34–36 meter monohull superyachts**, **Procat 85** surpasses them in terms of gross tonnage and onboard volume. This allows it to deliver the spacious feeling of a much larger yacht, while maintaining compact dimensions and efficiency.

Procat 85 is a true game-changer, offering **volumetric superiority that transcends its class** and setting a new standard for luxury catamarans.

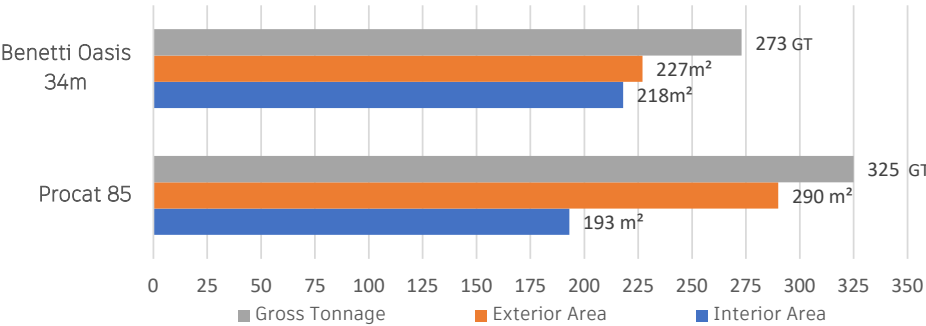


Class Leaders Comparison



* Only guest interior areas have been compared.

Beyond Size



* Only guest interior areas have been compared.

"Procat 85 is not just a yacht – it is a redefinition of how we live the sea. Here, silence becomes luxury, technology becomes trust, and the horizon becomes home.

Like every great innovation, it offers more than comfort: it offers a new way of being."





Precat 85

Technical
short specifications

1- Main Particulars

Loa:	26.1 m (85'7")
Beam:	11.5 m (37'9")
Max Draft:	2.06 m (6'10")
Displacement:	185 t (407,855 lbs)
GT:	325
Max Speed:	13 knots
Cruising Speed:	10 knots
Eco Cruising Speed :	8 knots
Range @ Cruising Speed :	1300 Nm
Range @ Eco Speed:	1600 Nm
Design Category :	ISO Category A –Ocean-
Main Engines:	2xMAN V8-1300 hp
Generators:	2x27 kW Cummins-Onan
Fuel Capacity:	15480 L (4090 US Gal.)
Fresh Water Capacity:	3578 L (945 US Gal.)
Black Water Capacity:	2300 L (608 US Gal.)
Grey Water Capacity:	2300 L (608 US Gal.)
Guest:	12 in 6 Cabins
Crew:	7 in 4 Cabins
Exterior Styling:	Nar Design
Interior Design:	Proccea
Naval Architecture:	Nar Design
Project Management:	Tufan & Brothers

2- Construction

- Hull and superstructure built in EN5083 H321 class-certified marine aluminum
- Welding inspections carried out with X-ray at 26 critical points
- All tanks pressure and leakage tested for maximum safety
- Tank walls sealed with class-approved ENECON Metalclad DurAlloy against future cracks or seepage

3- Engine room, propulsion and steering gear

- Engines: 2 x 1300 hp Common-rail MAN V8 diesels
- Fixed propellers: [Blokland] NiAlBr 5-blade Ø 1150 x P1110
- Propeller shafts: [Blokland] Ø 100 duplex stainless steel
- 2 spade rudders: GR A Steel rudder blade and duplex stainless-steel stock
- Engine controls: Electric controls at upper deck helm, sundeck helm, and main deck maneuvering station
- Steering system: Hydraulic transmission with 1 actuator per rudder, plus emergency hydraulic steering backup
- Ventilation: 6630 m³/h inlet + 6630 m³/h exhaust fan per engine room
- Insulation: A-60 fireproof and noise-insulated engine compartments
- Fire suppression: Fixed FM200 fire extinguishing system in each engine room
- 2x 420kg / 925.94lbs thrust Sleiwner hydraulic Sh420 bow thruster

4- Mooring and anchoring

- Equipped with 2 x Yapas galvanized 180 kg VHHP anchors and 2 x 150 m Ø14 mm Q3 grade stud-link galvanized chains, ensuring maximum holding power and reliability at anchor.
- 2 x Data DZC 1400H hydraulic windlasses with integrated chain counters provide smooth and precise anchoring operations.
- For mooring flexibility, the yacht is fitted with 4 x Data DHC 1600H hydraulic capstans, two positioned at the bow and two at the stern.
- Heavy-duty deck fittings include 8 x 360 mm AISI 316L stainless steel bollards and 8 x AISI 316L fairleads, ensuring safe and secure line handling.
- The yacht carries 4 x 80 m Ø24 mm floating orange mooring ropes (SWL = 8035 kg), offering both strength and visibility.
- Dedicated below-deck storage lockers are integrated beside the bollards at both bow and stern, providing practical and discreet stowage for mooring lines.
- At the stern platform, 2 x Seasmart pop-up cleats are integrated, providing practical solutions for tender or water toy mooring without disrupting deck aesthetics.
- 8 inflatable fenders (Ø420 x 1320 mm) and 2 heavy-duty stern bumpers.

5- Deck Layout

- All decks are finished in 10 mm genuine Burma teak, ensuring durability and timeless elegance.
- 17 watertight deck hatches with concealed hinges seamlessly integrate into the teak surfaces.
- Main deck aft features an 800 mm aluminum manual sliding door with clear opening.
- Upper deck salon is equipped with a 6 m-wide zero-sill electric sliding door, offering a 3 m clear opening framed by full-height glass panels.
- Two pantograph doors (750 mm clear opening) are fitted at the wheelhouse for safe and easy side access.
- Guardrails throughout the yacht are crafted from polished AISI 316L stainless steel, with a minimum height of 1000 mm for safety.
- All full-height windows are laminated thermally toughened glass
- DG41 glass with 3 mm Saflex interlayers, designed for high impact resistance.
- For cleaning and maintenance, Harken R27 access rail system is installed on both port and starboard sides.
- The wheelhouse windows are equipped with 6 x Speich marine wipers for optimal visibility in any weather.

Additional exterior highlights:

- Heated 2000 L aft hot tub on the main deck.
- Tender lift with 1000 kg SWL, capable of vertical and fore-aft movement.
- Opacmare swiveling box gangway 1212.
- 6 x 316L stainless steel awning poles with 6 modular Serge Ferrari sunshades (50 m² in total) on the upper deck.
- Gaggenau Vario Teppan Yaki & Electric Grill station on the sun deck.
- Food lift connecting lower and upper decks for seamless service.
- Foldable 5-step AISI 316L stainless steel swimming ladder for direct sea access

6- Paint system

- Hull Paint: Awlgrip Awlcraft 2000 – Off-White Revisited & Extreme Black
- Underwater Paint: International – Black Antifouling

7- Fuel system

- Total Fuel Capacity: 2 × 6,800 L storage tanks and 2 × 940 L day tanks, providing a combined capacity of 15,480 liters (≈ 4,090 US gal).

- Fuel Polishing & Separation: Equipped with Prefilter and Separ SWK 18/P30/C01 water separators with integrated sensors and filters, ensuring clean and safe fuel delivery at all times.
- Fuel Shutoff Valves: Independent fuel shutoff valves are installed on both main engines and generator supply lines for maximum operational safety.
- Pumping System: Each engine room features one Gianneschi CP 30 A1 fuel transfer pump supported by one Gianneschi Excelsior 3 manual backup pump, guaranteeing redundancy and reliable fuel handling in all conditions.

8- Freshwater system

- Freshwater Capacity: Two integrated freshwater tanks provide a total capacity of 3,578 liters (945 US gal), ensuring generous onboard supply for extended voyages.
- Watermakers: Each engine room is equipped with a SEARECOVERY AQUAMATIC XL 2600, delivering a combined production capacity of 9,842 liters/day (5,200 gal/day) of purified water.
- Hydrophore System: High-capacity Gianneschi WPS IDRO Ecoinox hydrophores in both engine rooms maintain constant water pressure across the vessel.
- Hot Water Capacity: Two Gianneschi 25B120T units, one in each engine room, provide a total of 240 liters of hot water, circulated by Wilo Top Z30 pumps to ensure instant hot water at every outlet without pressure loss.
- Deck Wash System: Dedicated deck wash connections are installed on every deck and mast, enabling efficient cleaning of both exterior spaces and solar panels.

- Guest Comfort: A retractable hot-and-cold mixer pop-up shower is located on the portside swim platform, offering convenient refreshment directly by the sea.

9- Sanitary system

- Grey Water Capacity: Two dedicated grey water tanks with a total capacity of 2,300 liters (608 US gal) collect drainage from showers, sinks, and galley areas. For cabins located further away—where odor risks are higher—Sanisplit NKS transfer boxes with a capacity of 270 L/min ensure efficient transfer and hygiene.
- Black Water Capacity: Two black water tanks also provide a total capacity of 2,300 liters (608 US gal), designed to manage all onboard sewage safely and reliably.
- Freshwater Toilets: All guest and crew WCs are fitted with 24V TECMA Silence Plus electric freshwater toilets, combining comfort, quiet operation, and reduced odor
- Sewage Treatment :A Teknikomar ECOmar 20 sewage treatment plant with a capacity of 2,000 L/h ensures full compliance with international environmental standards, treating wastewater before discharge.
- Shore Connections :Both grey and black water can be safely discharged ashore via a dedicated connection station located on the main deck.
- Rainwater Management: All external rainwater drains directly overboard, maintaining clear separation from grey and black water systems..

10- Bilge pump system

- Central Bilge System: Each engine room (port and starboard) is equipped with a commercial-standard central bilge line, fitted with Gianneschi ACB pumps (531A25m³/h @ 5 bar) to ensure high-capacity drainage in case of emergency. The bilge line valves are electrically actuated, allowing full monitoring and remote control both from the engine rooms and via the AMS (Alarm Monitoring System) on the bridge..
- Automatic Bilge Maintenance: To keep all bilge areas dry and clean at all times, the yacht features 14 Rule RM2000 stripping pumps (7.57 m³/h | 24V), automatically managing minor ingress with efficiency and redundancy.

11- Fire fighting system

- Main Fire Pump: Located in the starboard engine room, a Gianneschi ACB fire pump (531A 25m³/h @ 5 bar) provides robust firefighting capacity. For redundancy, this pump can be backed up by the vessel's additional bilge pumps.
- Hydrant Coverage: A network of 6 strategically placed fire hydrants ensures rapid access for crew across all decks during firefighting operations..
- Battery Fire Protection: The LiFePO₄ battery compartments are safeguarded by dual high-capacity fire lines equipped with specialized spray nozzles for rapid cooling and containment.

- Sprinkler System: A full-coverage sprinkler network spans the vessel, designed to automatically activate in case of localized fire events, adding another protective layer to the yacht's firefighting infrastructure.
- Deck & Chain Wash: Integrated seawater wash systems are installed in both hawsepipes to clean anchor chains and prevent salt accumulation.

12- Compressed air system

- Each engine room is equipped with a silent Kuletas 2hp air compressor featuring a 50-liter capacity, ensuring reliable compressed air supply without excessive noise.
- Quick-coupling connection points are distributed across the yacht for easy access, located in the engine rooms, aft main deck filling station, upper deck forward section, sun deck, and mast.

13- HVAC system

- Equipped with 2 x Frigomar 610NT chillers, delivering a total cooling capacity of 260,000 BTU/h, ensuring powerful and reliable climate control.

- Full climate coverage across all cabins and guest areas, providing consistent comfort regardless of outside conditions.
- Frigomar UTA700 Fresh Air Makeup Unit with 700 m³/h air flow @ 320 Pa, continuously refreshing indoor spaces with treated fresh air.

14- Electrical system

14.1- Electric Panels

- Main AC panels in starboard & port engine room.
- Main DC panels in starboard & port engine room.
- Secondary AC & DC electrical panels installed in different areas for multiplexing functions.

14.2- 440V AC, 50Hz Sources

- Shore power: 125 A
- Inverter: 6 x VICTRON 8000 VA 24V/230V
- Generators:- 2x Cummins-Onan 27 MDKDU 27 kVA 230V 50Hz

14.3- 24V DC Sources

Batteries:

- 4 Service batteries 1648 Ah / 25,6V - LFP-3.2V 206Ah LiFePO4
Total 168,7 kW
- 4 Engine starter batteries Mastervolt AGM 225 63A 12V
- 2 Generator starter batteries Mastervolt AGM 130 36A 12V
- 4x 1000A Battery shut-off

Solar Panel:

- TommaTech Solar Panels Wp=11 kWh, (Wp= ~70 kWh per day)

15- AV/IT system

Saloon :

- Bang & Olufsen Beosound Stage Dolby Atmos Soundbar.

Upper Deck :

- Wiim Pro Streamer
- 1 x Helix p six DSP Ultimate 24 volt amplifier
- 4 x JL Audio M6-770x-L-GwGw Speaker
- 2 x JL Audio M6-8IB-L-GwGw-4 Subwoofer

Main Deck :

- Wiim Pro Streamer
- 1 x Helix p six DSP Ultimate 24 volt amplifier
- 4 x JL Audio M6-770x-L-GwGw Speaker
- 2 x JL Audio M6-8IB-L-GwGw-4 Subwoofer

Sun Deck :

- Wiim Pro Streamer
- 2 x Helix p six DSP Ultimate 24 volt amplifier
- 8 x JL Audio M6-770x-L-GwGw Speaker
- 2 x JL Audio M6-8IB-L-GwGw-4 Subwoofer

Network :

- 3 X Ruije Outdoor WiFi 6 Access Point
- 11 X Ruije Indoor WiFi 6 Access Point

CCTV :

- 16 X i-PRO WV-S35402-F2L Surveillance & Security Cameras

16- Navigation Equipment

- 2 X Simrad NSO EVO3S CPU

High-performance processors providing multi-display integration and fast data processing (Bridge & Flybridge).

- 2 X Simrad M016-T 16" Touch Display

Wide touchscreens for intuitive navigation control (Bridge & Flybridge).

- 1 X Simrad M016-P 16" Display

High-resolution display for critical piloting data (Bridge).

- 2 X Simrad OP50 Remote Controller

Ergonomic remote panels for easy access to all navigation functions.

- 1 X Simrad RI50 Interface

Integration hub for radar, sonar, and chartplotter systems.

- 2 X Simrad GS25 GPS Antenna

High-accuracy GPS antennas providing precise positioning (Bridge & Flybridge).

- 1 X Simrad Precision-9 Compass

Digital heading sensor delivering reliable directional data for autopilot.

- 1 X Simrad SS60 Transducer

High-precision sonar sensor for depth and temperature readings.

- 1 X Simrad ForwardScan Transducer

Real-time forward-looking sonar for safe navigation in shallow waters.

- 1 X Simrad HALO-2003 Radar

Solid-state radar with pulse compression for superior target detection at short and long range.

- 1 X Simrad NAC-2 Autopilot CPU

Autopilot central unit ensuring accurate course stability.

- 1 X Simrad RF40 Rudder Feedback Unit

Constant rudder angle monitoring for precise autopilot operation.

- 1 X Simrad HS40 Wireless Handset

Portable wireless control handset for flexible communication.

- 1 X Simrad RS40 VHF

Fixed VHF radio with DSC functionality (Bridge).

- 1 X Simrad RS20 VHF

Compact, durable VHF radio (Flybridge).

- 1 X Simrad NAIS-500 AIS System

Automatic Identification System for traffic awareness and collision avoidance.

- 1 X Simrad SonarHub

Advanced sonar module for fish and seabed imaging.

- 1 X Ultrasonic Wind Sensor (120WX)

Measures wind speed, direction, and environmental conditions with high accuracy.

- 1 X FLIR M232 Pan/Tilt 9Hz Marine Thermal Camera

Advanced thermal imaging and night vision system with pan & tilt capability, enabling safe navigation during nighttime operations and low-visibility conditions.

Procat

PROCCEA YACHTING AG

Lättichstrasse 6 6340

Baar / SWITZERLAND

info@procatyachts.com

+90 532 211 0678

